

**SPEIRS  
MAJOR**

Maggie's Centre, Lanarkshire,  
UK

**LIGHT  
ARCHITECTURE**

8 Shepherdess Walk  
London,  
N1 7LB  
United Kingdom

T +44 (0)20 7067 4700

Co-lab Shibuya Cast  
23-21, Shibuya 1-Chome  
Tokyo 150-0002  
Japan

T +81 (0)3 3400 8855

[info@smlightarchitecture.com](mailto:info@smlightarchitecture.com)  
[press@smlightarchitecture.com](mailto:press@smlightarchitecture.com)

# SPEIRS MAJOR



Daylight enhancement, beautifully supported by welcoming artificial light.

CLIENT  
Maggie's Centre

ARCHITECTS  
Reiach and Hall

LANDSCAPE ARCHITECTS  
Rankin Fraser

PHOTOGRAPHER  
Dave Morris

PROJECT TEAM  
Carrie Donahue  
Bremner, Dave Morris



**SPEIRS MAJOR**



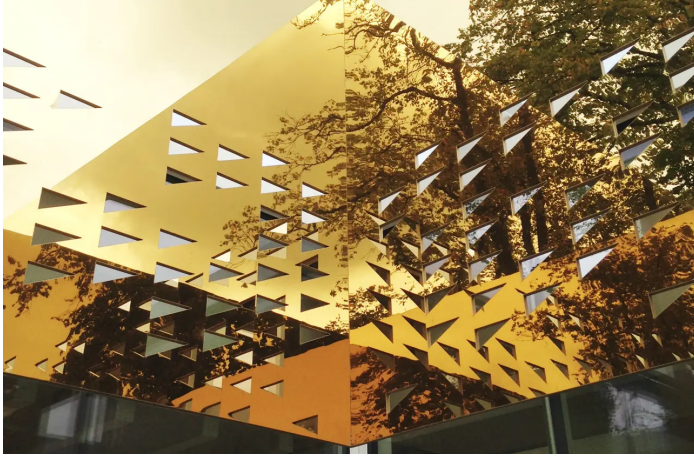


# SPEIRS MAJOR





# SPEIRS MAJOR



Having conducted a series of studies to analyse the level of penetration, we evolved the idea into the elegant, highly polished and perforated gold structures that have come to be known as 'geode light catchers'.



The brief for the artificial lighting called for enough flexibility to cope with multiple tasks in these adaptable spaces, as well as supporting a domestic level of comfort.



To mark the progression through the building, the design focuses on highlighting the major architectural and landscape interventions. We integrated light such that it frames vistas, drawing visitors into and through the building, while reinforcing the connection between inside to outside. Warm light washes the timber surfaces to bring out their inherent warmth, with a second layer of domestic furniture style pieces contributing to a homely atmosphere.



# SPEIRS MAJOR

